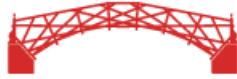


15. We should not look directly at \_\_\_\_\_ sun as the strong rays will hurt our eyes.

- (1) a
- (2) an
- (3) the ( )

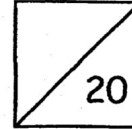
16. Ali is playing with his new toy. \_\_\_\_\_ is having fun.

- (1) He
- (2) It
- (3) She ( )



3

ROSYTH SCHOOL  
P1 HOLISTIC ASSESSMENT 2019, TERM 3  
ENGLISH LANGUAGE  
DIAGNOSTIC ASSESSMENT



Name: \_\_\_\_\_ ( ) Date: 6 August 2019

Class: P1 - \_\_\_\_\_ Parent's Signature: \_\_\_\_\_

**Section A: Vocabulary (10 x 1 mark)**

Read each question carefully. Choose the correct answer and write its number (1, 2 or 3) in the brackets provided. (6 x 1 mark)

1. At noon, Tim went to his grandparents' house for \_\_\_\_\_ .

- (1) lunch
- (2) dinner
- (3) breakfast



( )

2. The cake was so \_\_\_\_\_ that fifty people could eat it.

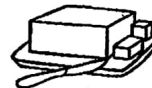
- (1) big
- (2) small
- (3) heavy



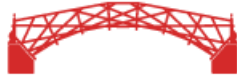
( )

3. Mother \_\_\_\_\_ some butter on the bread with a knife.

- (1) spread
- (2) scooped
- (3) sprinkled



( )



4. The \_\_\_\_\_ snapped and ate the duck hungrily.

- (1) lion
- (2) monkey
- (3) crocodile



( )

5. The sheep and its \_\_\_\_\_ were playing in the field.

- (1) calf
- (2) foal
- (3) lamb



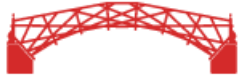
( )

6. Walking through the \_\_\_\_\_, Ben saw a monkey on top of a tree.

- (1) river
- (2) jungle
- (3) tunnel



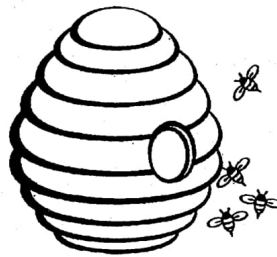
( )

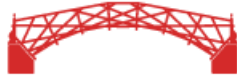


For each question, fill in each blank with the correct word from the box below. Use each word only ONCE. (4 x 1 mark)

beehive	garden	stayed
shouted	queen	flew

Once upon a time, there lived an old king in the palace. He loved his (7) \_\_\_\_\_ very much. Every morning, they would go for a walk in the garden. One day, they saw a (8) \_\_\_\_\_ high up on a tree as they were walking. Suddenly, some bees (9) \_\_\_\_\_ towards them. The king (10) \_\_\_\_\_ loudly for help. His guards came quickly to rescue them. Thankfully, no one was injured.





**Section B: Grammar (10 x 1 mark)**

Read each question carefully. Choose the correct answer and write its number (1, 2 or 3) in the brackets provided. (6 x 1 mark)

11. Ken and I \_\_\_\_\_ best friends. We always play together.

- (1) is
- (2) am
- (3) are (     )

12. The chef added \_\_\_\_\_ cheese to the pizza.

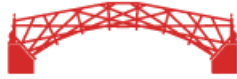
- (1) a few
- (2) some
- (3) many (     )

13. Last night, my brother \_\_\_\_\_ off his bed and injured his foot.

- (1) jumps
- (2) jumped
- (3) jumping (     )

14. "Eat healthily \_\_\_\_\_ you may fall sick," said Mother.

- (1) or
- (2) so
- (3) and (     )

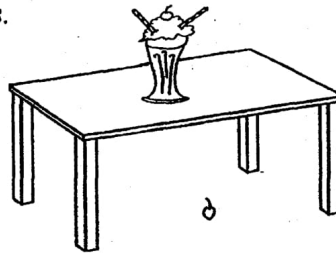


For each question, fill in each blank with the correct word from the box below. Use each word only ONCE. (4 x 1 mark)

at	into	on	under	over
----	------	----	-------	------

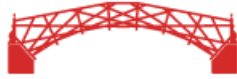
It was a hot day. Mary and her parents decided to make an ice-cream sundae. First, Mary's father scooped some ice cream (17) \_\_\_\_\_ a tall cup. Then, her mother placed two biscuit sticks into the ice cream.

When Mary was about to add a cherry, she dropped it on the floor. It rolled (18) \_\_\_\_\_ the dining table. Mary took another cherry and placed it carefully (19) \_\_\_\_\_ the ice cream. When it was done, Mary and her parents sat (20) \_\_\_\_\_ the table to enjoy it. It was delicious.



☺ Please check your work carefully ☺

-End of paper-



**SCHOOL :** ROSYTH PRIMARY SCHOOL  
**LEVEL :** PRIMARY 1  
**SUBJECT :** ENGLISH  
**TERM :** 2019 DIAGNOSTIC ASSESSMENT

---

Q1	Q2	Q3	Q4	Q5	Q6
1	1	1	3	3	2

Q7) queen

Q8) beehive

Q9) flew

Q10) shouted

Q11) 3

Q12) 2

Q13) 2

Q14) 1

Q15) 3

Q16) 1

Q17) into

Q18) under

Q19) on

Q20) at